

Transition to ICD-10-CM Rehabilitation

Patricia W. Tulloch RN, BSN, MSN, HCS-D
RBC Limited Healthcare & Management Consultants
P: 845-889-8128 • E: rbc@netstep.net
www.rbclimited.com



Objectives



- **Analyze the ICD-10-CM Chapter 13 categories (M00 -M99) & Chapter 6 categories (G00-G99)**
- **Review Chapters 6 & 13 Guidelines**
- **Explain ICD-10-CM terminology as it relates to coding diseases of the musculoskeletal & nervous system**
- **Identify pathophysiology terms as they relate to coding musculoskeletal *and* neurological diseases**
- **Apply ICD-10-CM to common home health scenarios**

Housekeeping Information

- **Handout Materials**

- **Webcast Participants**

- If you haven't done so already, you can download the handouts and tools in the handout box to the left of your screen. At any time during the presentation – you can “**pause**” the program. Go to the lower left of the screen and click on the “**pause**” button. Please note you may have to scroll down on the page to see the “**pause**” button.

- **DVD Participants**

- The main contact should have received the handout materials link in the receipt email that was issued upon completion of purchase. If you still need a copy of the handouts, ask your contact or email RBC at rbc@netstep.net.

- Email your questions to rbc@netstep.net

- Lastly, for further information about our Education Programs and Products, go to: <http://education.rbclimited.com>

Musculoskeletal & Nervous System

- **Primary Focus for Rehab Services**

- 40 million Americans have some form of arthritis
 - Musculoskeletal and Neurologic Diseases are a Primary Focus for Health System Rehabilitation Services
 - Primary Reason for Hospitalization of Medicare Beneficiaries: Falls

- **Home Health is Critical in the Healing Pathway for Neuromuscular Rehabilitation**

- **ICD-10-CM codes aligns updated medical terminology & practices with enhanced codes**

- **Increased code specificity to track and correlate with quality outcomes & costs**

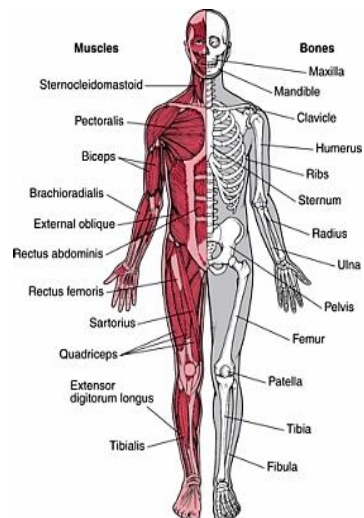
- Treatment & Best Practice Updates

How About Home Care?

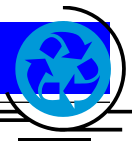
- **Rehabilitation Services is the Top Three Reasons for Home Care Services**
- **Post Hip Fractures**
 - Traumatic; Pathologic
- **Post Joint Replacements**
- **Therapy services improves ALL Quality Outcomes**
 - Safety
 - Pain Interfering with Activity and/or Movement
 - Healing Status of Surgical Wounds
 - Activities of Daily Living (ADL's & IADL's)

Musculoskeletal System

- **Musculoskeletal System**
 - Support Framework
 - Flexible Movement
 - Protects Internal Organs
- **Works with Other Body Systems**
 - Homeostasis
 - Heat Generation
- **Structure**
 - Muscles, bones, joints
 - Ligaments, tendons, cartilage
 - Supportive Framework



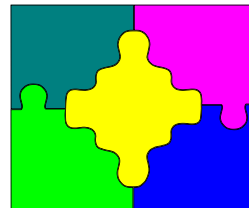
Chapter 13: M00-M99



- **Diseases of the Musculoskeletal System**
 - Musculoskeletal System (M00-M99)
 - Diseases & Disorders
 - Intraoperative & postprocedural complications & disorders, NEC (M96)
 - Other diseases of the musculoskeletal system (M99)
- **ICD-10-CM Chapter 13 Guideline Focus**
 - Specificity: Site & Laterality
 - Pathologic Fractures
 - Osteoporosis
- **ICD-10-CM**
 - Updates terminology to reflect current medical practice

Specific Chapter 13 Blocks

- **M00-M02** Infectious arthropathies
- **M05-M14** Inflammatory polyarthropathies
- **M15-M19** Osteoarthritis
- **M20-M25** Other Joint Disorders
- **M26-M27** Dentofacial Disorders of the Jaw
- **M30-M36** Systemic Connective Tissue Disorders
- **M45-M49** Spondylopathies
- **M60-M63** Disorders of Muscles
- **M65-M67** Other Soft Tissue Disorders
- **M80-M85** Disorders of Bone Density & Structure
- **M86-M90** Other Osteopathies
- **M91-M94** Chondropathies **M96** Complications



Official Code Guidelines



- **Chapter 13: Diseases of the Musculoskeletal System**
 - Site & Laterality Designations
 - Increased Instruction Notes (Code first; Use Additional Code)
 - Enhanced Combination Codes
 - Updated Terminology to Reflect Current Medical Practices
- **Site & Laterality (M00-M99)**
 - Multiple sites involved in bone or joint diseases or disorders
 - Code: “Multiple Sites”
 - If No “Multiple Sites” code available, then code each different site
 - Bone versus Joint
 - For certain conditions, the bone may be affected at the upper or lower end
 - E.g.: Avascular necrosis of bone (M87); Osteoporosis M 80, M81
 - Though the portion of the bone may be at the joint, the code designation is the bone, not the joint

More on Code Guidelines

- **Acute Traumatic versus Chronic or Recurrent Musculoskeletal Conditions**
 - Bone, joint or muscle conditions that are the result of a healed injury are usually found in Chapter 13
 - Chronic or recurrent conditions are usually coded from Chapter 13
 - Current, acute injury should be coded to the appropriate injury code from Chapter 19
- **Pathologic Fractures**
 - 7th character “A” is for use as long as the patient is receiving active treatment for the fracture
 - 7th character “D” is to be used for encounters after the patient has completed active treatment (subsequent encounters)

More on Code Guidelines

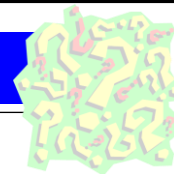
■ Osteoporosis

- Systemic condition; all bones of the musculoskeletal system are effected
- Site is NOT coded for Osteoporosis M81
- Site codes under M80, Osteoporosis currently have a pathologic fracture due to osteoporosis
 - Identifies the site of the fracture, not the site of the osteoporosis

■ Osteoporosis

- Without a Fracture M81
 - Code also Hx of pathologic fracture: Z87.310
- With a fracture M80
 - Use for any patient with known osteoporosis who suffers a fracture, even if the patient had a minor fall or trauma if that fall or trauma would not usually break a normal, healthy bone.

Compare Code Sets



■ ICD-9-CM

- *Some Combination Codes*
- *Assign Additional Codes*
- *Traumatic versus Pathologic Fractures*

■ ICD-10-CM

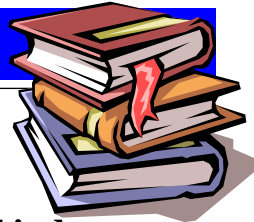
- *Expanded Combination Codes with Site & Laterality*
- *Expanded Requirements to Assign Additional Codes*
- *Expanded Specificity of Type of Fracture*
- *7th character for encounter & healing status*
- *M96 Intraoperative & Postprocedural Complications*

ICD-10-CM Conventions

- **Ensure Coder Reads**
 - Includes notes: Further defines a category
 - Inclusion terms: Some of the conditions included in that code
 - Code first/use additional code notes
 - Code also – Two codes may be required but sequencing is dependent upon circumstances
 - See and See Also
- **ICD-10-CM has many more combination codes**
 - Specificity; manifestation & complications

Steps to Accurate Coding


- **See Basic Code Rules**
- **Identify the main diagnostic term**
- **Find the main term in the alphabetical index**
- **Read the sub-terms under the main term**
- **Follow the cross-reference instructions**
- **ALWAYS Verify the code in the Tabular Index**
- **Read ALL Instructions**
 - * Exclusion notes *NOS (not otherwise specified)
 - * Inclusion notes *NEC (not elsewhere classified)
 - * Code 1st notes *Manifestation notes



Code Steps Applied

- **Compression vertebral fracture due to Osteoporosis**
- **Step 1**
- **Look up term in Alphabetical Index**
- **Osteoporosis (female) (male) M81.0**
- **Osteoporosis with current pathological fracture M80.00**
- **Age related M81.0**
 - With current pathologic fracture M80.00
 - Fracture Site specific reference codes
 - Vertebra M80.08

Code Steps Applied

- **Pathologic fracture, vertebrae, due to osteoporosis**
- **Step 2**
- **Verify the code in the Tabular index**
 - **M80.08xD** Age-related osteoporosis with current pathological fracture, vertebra(s)
 **x7th character**
 - A Initial encounter for fracture**
 - D Subsequent encounter for fracture with routine healing**
 - G Subsequent encounter for fracture with delayed healing**
 - K Subsequent encounter for fracture with nonunion**
 - P Subsequent encounter for fracture with malunion**
 - S Sequela (late effect)**

Code Steps Applied

- **Traumatic left hip fracture**
- **Step 1**
- **Look up term in Alphabetical Index**
- **Fracture, traumatic, hip**
 - *See fracture, femur, neck*
- **Fracture, femur, neck**
 - *See fracture, femur, upper end, neck*
- **Fracture, femur, upper end, neck**
 - **S72.00-**

Code Steps Applied

- **Traumatic left hip fracture**
- **Step 2**
- **Verify the code in the Tabular index**
 - **S72.00 Fracture of unspecified part of neck of femur**
 - S72.001 Fracture of unspecified part of neck of right femur
 - S72.002 Fracture of unspecified part of neck of left femur
 - S72.009 Fracture of unspecified part of neck of unspecified femur
 - **S72.01 Unspecified intracapsular fracture of femur**
 - S72.011 Unspecified intracapsular fracture of right femur
 - S72.012 Unspecified intracapsular fracture of left femur
 - S72.019 Unspecified intracapsular fracture of unspecified femur
 - **S72.02 Fracture of epiphysis (separation) (upper) of femur**



7th

7th Character for Category S72

- **The appropriate 7th character is to be added to each code from category S72**
 - A initial encounter for closed fracture
 - B initial encounter for open fracture type 1 or 2
 - Initial encounter for open fracture NOS
 - C initial encounter for open fracture type IIIA, IIIB, or IIIC
 - D subsequent encounter for closed fracture with routine healing
 - E subsequent encounter for open fracture type 1 or II with routine healing
 - F subsequent encounter for open fracture type IIIA, IIIB, or IIIC
 - G subsequent encounter for closed fracture with delayed healing
 - H subsequent encounter for open fracture type I or II delayed healing

7th Character for Category S72

- **The appropriate 7th character is to be added to each code from category S72 (Cont'd)**
 - J subsequent encounter for open fracture type IIIA, IIIB, or IIIC
 - K subsequent encounter for closed fracture with nonunion
 - M subsequent encounter for open fracture type I or II with delayed healing
 - N subsequent encounter for open fracture type IIIA, IIIB, or IIIC
 - P subsequent encounter for closed fracture with malunion
 - Q subsequent encounter for open fracture type I or II with malunion
 - R subsequent encounter for open fracture type IIIA, IIIB, or IIIC with malunion
 - S sequela (late effect)

Quick Check

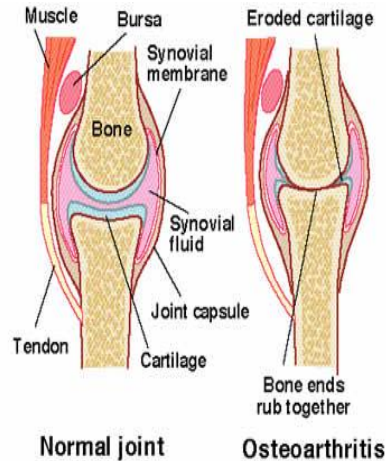
- **ICD-10-CM aligns terminology with updated clinical practice.**
 - True
 - False
- **ICD-10-CM Code Guidelines instructs coders to code osteoporosis to the specific joint or bone site.**
 - True
 - False
- **The use of 7th characters are optional for a traumatic fracture**
 - True
 - False

Arthropathies: M00-M25

- **M00 Pyogenic arthritis**
- **M01 Direct infections of joint in infectious & parasitic diseases classified elsewhere**
- **M02 Postinfective & reactive arthropathies**
- **M05 Rheumatoid arthritis with rheumatoid factor**
- **M08 Juvenile arthritis**
- **M10 Gout**
- **M12.5 Traumatic arthropathy**
- **M15-M19 Osteoarthritis**
- **M20-M25 Other joint deformities**

Osteoarthritis: M15-M19

- **Group of conditions involving damage to the joint of the body**
- **Symptoms**
 - Pain; stiffness, swelling
- **Effects large & small joints**
 - *Rheumatoid arthritis most common*
- **Code Selection**
 - Type of osteoarthritis
 - Primary, secondary, or traumatic
 - Laterality
- **Treatment Options**



More on Osteoarthritis

- **M15 Polyosteoarthritis**
 - *Includes arthritis of multiple sites*
- **M16 Osteoarthritis of hip**
 - M16.0 Bilateral primary osteoarthritis of hip
 - M16.1 Unilateral primary osteoarthritis of hip
 - M16.10 Unilateral primary osteoarthritis, unspecified hip
 - M16.11 Unilateral primary osteoarthritis, right hip
 - M16.12 Unilateral primary osteoarthritis of left hip
 - M16.2 Bilateral osteoarthritis resulting from hip dysplasia
- **M17 Osteoarthritis of knee**
- **M19 Other and unspecified osteoarthritis**

One Case Scenario

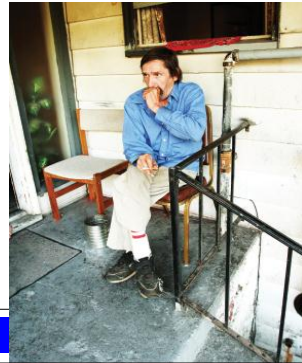
- **Patient admitted with mild intermittent asthma with an acute exacerbation. Emphysema; CHF; Generalized osteoarthritis.**

J45.21 Mild intermittent asthma with an acute exacerbation

J43.9 Emphysema

I50.9 Heart Failure, Unspecified

M15.9 Osteoarthritis, generalized



More Code Examples

- **M17.0 Bilateral primary osteoarthritis of knee**
- **M17.10 Unilateral primary osteoarthritis, unspecified knee**
- **M17.11 Unilateral primary osteoarthritis, right knee**
- **M17.12 Unilateral primary osteoarthritis, left knee**
- **M17.2 Bilateral post traumatic osteoarthritis of knee**
- **M17.30 Unilateral post traumatic osteoarthritis, unspecified knee**
- **M17.31 Unilateral post traumatic osteoarthritis, right knee**
- **M17.32 Unilateral post traumatic OA, left knee**

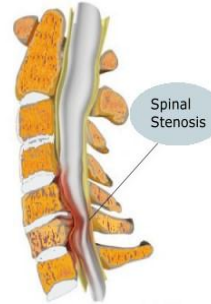
Spinal Stenosis

- **Narrowing of Spine**

- Invertebral foramen
- *Opening between vertebrae*

- **Symptoms**

- Pain when walking
- Difficulty or imbalance when walking
- Problems controlling urine or bowel movements
- Problems urinating or having a bowel movement



- **Code Selection**

- Site
- Manifestations

Some Stenosis Code Examples

- **M48.04 Spinal stenosis thoracic region**
- **M48.05 Spinal stenosis thoracolumbar region**
- **M99.22 Subluxation stenosis of neural canal of thoracic region**
- **M99.32 Osseous stenosis of neural canal of thoracic region**
- **M99.42 Connective tissue stenosis of neural canal of thoracic region**
- **M99.52 Intervertebral disc stenosis of neural canal of thoracic region**

More Stenosis Code Examples

- **M48.06 Spinal stenosis lumbar region**
- **M48.07 Spinal stenosis lumbosacral region**
- **M99.23 Subluxation stenosis of neural canal of lumbar region**
- **M99.33 Osseous stenosis of neural canal of lumbar region**
- **M99.43 Connective tissue stenosis of neural canal of lumbar region**
- **M99.53 Intervertebral disc stenosis of neural canal of lumbar region**

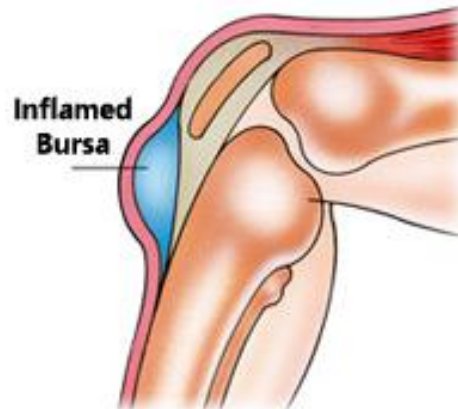
One Case Scenario

- **80 year old female patient admitted with senile osteoporosis. Severe lower back pain. No history of trauma or falls. X-ray revealed spinal stenosis of lumbosacral region. CHF; HTN; Hypothyroidism.**
M48.07 Spinal stenosis, lumbosacral region
M81.0 Age-related osteoporosis without current pathological fracture
I50.9 Congestive Heart Failure
I10 Essential (primary) HTN
I73.9 Insufficiency, vascular, peripheral
E03.9 Hypothyroidism (acquired)



Bursitis

- Inflammation of the fluid-filled sac (bursa) of synovial fluid
- Acute or Chronic
- Causes
 - Trauma
 - Rheumatoid arthritis
 - Gout
 - Infection
- Code Selection
 - Type of Bursitis
 - Laterality



Bursitis Code Examples

- M70.10 Bursitis, unspecified hand
- M70.11 Bursitis, right hand
- M70.12 Bursitis, left hand
- M71.141 Other infective bursitis, right hand
- M71.142 Other infective bursitis, left hand
- M71.149 Other infective bursitis, unspecified hand
- M06.241 Rheumatoid bursitis, right hand
- M06.242 Rheumatoid bursitis, left hand
- M06.249 Rheumatoid bursitis, unspecified hand

Tendonitis

- **Inflammation of a tendon**

- Connects bone to bone

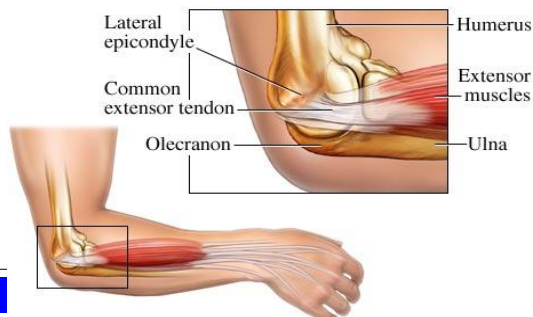
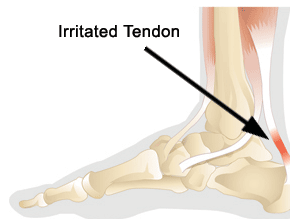
- **Causes**

- Trauma
- Overuse Injury
- Anatomical

- **Code Selection**

- Site Specificity
- Laterality

Achilles Tendinosis/Tendinitis



Integrated OASIS Solutions™

Tendonitis Code Examples

- **M76.50 Patellar tendonitis, unspecified knee**
- **M76.51 Patellar tendonitis, right knee**
- **M76.52 Patellar tendonitis, left knee**
- **M76.60 Achilles tendonitis, unspecified**
- **M76.61 Achilles tendonitis, right leg**
- **M76.62 Achilles tendonitis, left leg**
- **M76.70 Peroneal tendonitis, unspecified**
- **M76.71 Peroneal tendonitis, right leg**
- **M76.72 Peroneal tendonitis, left leg**

Integrated OASIS Solutions™

34

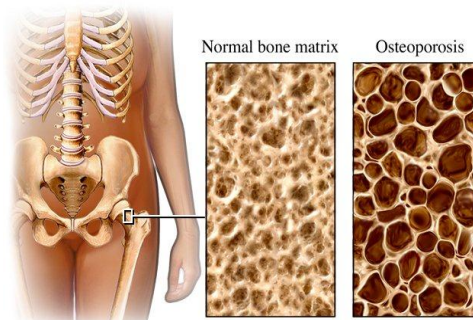
© RBC Limited 2012

Case Scenario

- Patient admitted post hospitalization with Type 2 DM. CHF; HTN. Pain right knee due to old tear of the posterior horn of the medial meniscus. Tendonitis of left achilles. Not current surgical candidate. SNV & PT.
- E11.9 Type 2 Diabetes without complications
- I50.9 Congestive Heart Failure NOS
- I10 Essential (Primary) Hypertension
- **M76.62** Achilles tendonitis, left leg
- **M23.221** Derangement of posterior horn of medial meniscus due to old tear or injury, right knee

Osteoporosis

- **Thinning of bone tissue and loss of bone density**
 - Most common bone disease
- **Symptoms**
 - Curvature of spine
- **Cause**
 - Hormone changes
- **Code Selection**
 - Type of osteoporosis
 - Laterality
 - With or without Fracture (Pathological)
- **Treatment Options**



Code Guidelines Review

- **Osteoporosis**
 - Systemic condition; all bones of the musculoskeletal system are effected
 - Site is **NOT** coded for Osteoporosis M81
 - Site codes under M80, Osteoporosis currently have a pathologic fracture due to osteoporosis
 - Identifies the site of the fracture, not the site of the osteoporosis
- **Osteoporosis**
 - Without a Fracture M81
 - Code also Hx of pathologic fracture: Z87.310
 - With a fracture M80
 - Use for any patient with known osteoporosis who suffers a fracture, even if the patient had a minor fall or trauma if that fall or trauma would not usually break a normal, healthy bone.

7th Character for Category M80

- **The appropriate 7th character is to be added to each code from category M80**
 - A initial encounter for closed fracture
 - D subsequent encounter for closed fracture with routine healing
 - G subsequent encounter for closed fracture with delayed healing
 - K subsequent encounter for fracture with nonunion
 - P subsequent encounter for fracture with malunion
 - S sequela (late effects)

Nonunion = Failure to heal normally

Malunion = Faulty union of a fractured bone

Osteoporosis Code Examples

- **M81.0 Age-related osteoporosis without current pathological fracture**
 - *Osteoporosis NOS*
 - *Code also personal history of osteoporosis fracture (Z87.310)*
- **M81.6 Localized osteoporosis**
- **M81.8 Other osteoporosis without current pathological fracture**
- **M80.08x- Age-related osteoporosis with current pathological fracture, vertebrae(s)**
- **M80.841- Other osteoporosis with current pathological fracture, right hand**

Pathological Fractures

- **Cause**
 - Weakness of the bone
- **Underlying Etiologies**
 - Osteoporosis
 - Neoplasms
 - Infections
 - Cysts
 - Other Bone disorders
- **Code Assignment**
 - Site; Laterality; Underlying Condition; Episode of Care (7th character)



7th Character for Category M84

- **The appropriate 7th character is to be added to each code from category M84**
 - A initial encounter for closed fracture
 - D subsequent encounter for closed fracture with routine healing
 - G subsequent encounter for closed fracture with delayed healing
 - K subsequent encounter for fracture with nonunion
 - P subsequent encounter for fracture with malunion
 - S sequela (late effects)

Nonunion = Failure to heal normally

Malunion = Faulty union of a fractured bone

Code Examples

- **M84.4 Pathologic fracture, NEC**
 - M84.471 Pathological fracture, right ankle
 - M84.472 Pathological fracture, left ankle
 - M84.474 Pathological fracture, right foot
- **M84.5 Pathologic fracture in neoplasm disease**
 - M84.511 Pathological fracture in neoplastic disease, right shoulder
 - M84.512 Pathological fracture in neoplastic disease, left shoulder
 - M84.519 Pathological fracture in neoplastic disease, unspecified shoulder
- **M84.6 Pathologic fracture in other disease**

One Case Scenario

- **Patient admitted post hospitalization with a recent diagnosis of thoracic spine bone metastasis from primary breast neoplasm. History of breast cancer 5 years ago. Treatment completed at that time. X-ray confirmed acute fracture of sixth and seventh thoracic vertebrae with evidence of neoplasm lesion.**

M84.58xD Pathological fracture in neoplastic disease, vertebrae, subsequent encounter, normal healing

C79.51 Secondary malignant neoplasm of bone

Z85.3 Personal history of malignant neoplasm of the breast

More Case Scenarios

- **Pathological compression fractures of several lumbar vertebrae due to osteoporosis. COPD; HTN.**
 - **M80.08xD Age-related osteoporosis with current pathological fracture, vertebrae**
 - **J44.9 COPD**
 - **I10 Essential (primary) HTN**
- **Pathologic fracture, left shoulder due to osteoporosis. Type 2 DM; UTI.**
 - **M80.812D Other osteoporosis with current path fx; left shoulder**
 - **E11.9 Type 2 Diabetes mellitus; N39.0 Urinary tract infection**

Traumatic Fractures

- **Cause**
 - Injury (Sports; Vehicles; Other)
- **Code Assignment**
 - Anatomic Site
 - Laterality
 - Fracture Type
 - Displaced or nondisplaced
 - Episode of Care (7th character)
- **Documentation Needs**
 - Gustillo Open Fracture Classification System
 - Mechanism of Injury; Soft Tissue Damage
 - Degree of Skeletal Involvement



Code Guidelines



- **Acute Traumatic versus Chronic or Recurrent Musculoskeletal Conditions**
 - Bone, joint or muscle conditions that are the result of healed injury are usually found in Chapter 13
 - Chronic or recurrent conditions are usually coded from Chapter 13
 - Current, acute injury should be coded to the appropriate injury code from Chapter 19 (S00-S99)
 - Fracture not indicated as open *or* closed: Code to Closed
 - Fracture not indicated as Displaced or not displaced: Code to Displaced
- **Traumatic Fractures: 7th Character**
 - 7th character required on all traumatic (acute) fractures

Injury & External Cause Extensions

■ Fracture Extensions: 7th Digit

- A = Initial encounter for closed fracture
- B = Initial encounter for open fracture
- D = Subsequent encounter for fracture with routine healing
- G = Subsequent encounter for fracture with delayed healing
- K = Subsequent encounter for fracture with nonunion
- P = Subsequent encounter for fracture with malunion
- S = Sequelae
- Aftercare codes for fractures no longer used
 - Acute fracture with the 7th character to show subsequent encounter
 - A fracture not indicated as open or closed should be coded to closed
 - S72.009D Fracture, traumatic hip, NOS

Fracture Specificity

■ S72.0 Fracture of head and neck of femur

- S72.00 Fracture of unspecified part of neck of femur

Fracture of hip NOS

Fracture of neck of femur NOS

- S72.001 Fracture of unspecified part of neck of right femur
- S72.002 Fracture of unspecified part of neck of left femur
- S72.009 Fracture of unspecified part of neck of unspecified femur
- *Subcapital fracture of femur*
- S72.011 Unspecified intracapsular fracture of right femur
- S72.012 Unspecified intracapsular fracture of left femur
- S72.019 Unspecified intracapsular fracture of unspecified femur
- *Transepiphyseal fracture of femur*

More Fracture Code Examples

- **S42.01 Fracture of sternal end of clavicle**
 - S42.011- Anterior displaced fracture of sternal end of right clavicle
 - S42.012 Anterior displaced fracture of sternal end of left clavicle
- **S42.3 Fracture of shaft of humerus**
- **S42.4 Fracture of lower end of humerus**
- **S42.9 Fracture of shoulder girdle, part unspecified**
 - S42.00x- Fracture of unspecified shoulder girdle, part unspecified
 - S42.91x- Fracture of right shoulder girdle, part unspecified
 - S42.92x- Fracture of left shoulder girdle, part unspecified

One Case Scenario

- Patient admitted to home health for PT & OT post surgical repair of a commuted fracture of the right intertrochanteric femur.
- ~~**ICD-9-CM**
V57.89 Other rehab procedures
V54.15 AC for healing traumatic fracture, upper leg~~

<u>ICD-10-CM</u> S72.141D Displaced intertrochanteric fx of right femur, <u>subsequent encounter for closed fx with routine healing</u>
--

Another Case Scenario

- Patient admitted to home health post right hip replacement. SVN for PT/INR & dressing changes. PT for gait training, home safety, muscle strengthening and assistive device. HTN.

ICD-9-CM

~~V54.81 A/C Joint Replacement
781.2 Abnormal gait
401.9 HTN
V58.83 Enctr. Drug monitoring
V58.61 Long term Use of anticoags
V58.31 Dressing Changes
V43.65 Joint Replaced, Hip~~

ICD-10-CM

Z47.1 A/C joint replacement
Z96.641 Right artificial hip joint
I10 HTN
Z51.81 Enctr. therap. drug mn.
Z79.01 LT use anticoags
Z48.01 Surgical dressing chngs.

Common Case Scenario

- Patient admitted post hospitalization for repair of traumatic fracture right hip. Insulin dependent diabetic with neuropathy. HTN; Hyperlipidemia.

S72.001D Subsequent encounter for closed fracture with routine healing

E11.40 Type 2 Diabetes with neuropathy

I10 Essential Hypertension

E78.5 Hyperlipidemia

Z79.4 Long term current use of insulin

Complications: M96

- **Moved to Procedure Specific Body Systems Chapters**
 - Intraoperative & Postprocedural Complications
 - Additional codes to specify nature of complication
- **Example:**
 - **M96.820** Accidental puncture and laceration of a musculoskeletal structure during a musculoskeletal procedure
 - **M96.65** Fracture of pelvis following insertion of orthopedic implant, joint prosthesis, or bone plate

Some Complication Codes

- **M96.0** Pseudarthrosis after fusion or arthrodesis
- **M96.1** Postlaminectomy syndrome, NEC
- **M96.2** Postradiation kyphosis
- **M96.3** Postlaminectomy kyphosis
- **M96.4** Postsurgical lordosis
- **M96.5** Postradiation scoliosis
- **M96.621** Fracture of humerus following insertion of orthopedic implant, joint prosthesis, or bone plate, right arm
- **M96.810** Intraoperative hemorrhage and hematoma of a musculoskeletal structure complicating a musculoskeletal procedure

Nervous System

- **Control Center for Entire Body**

- **Functions**

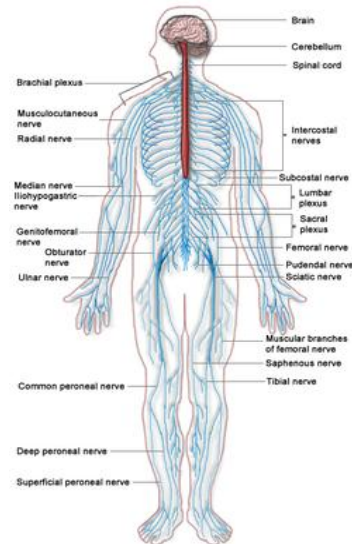
- Signals to body
- Homeostasis

- **Primary Organs**

- Brain
- Spinal Cord
- Peripheral Nervous System

- **Code Considerations**

- Laterality
- Manifestations



Chapter 6: G00-G99



- **Diseases of the Nervous System & Sense Organs**

- Nervous System (G00-G99)
 - Diseases & Disorders
 - Intraoperative and postprocedural complications and disorders of the nervous system (G97)
 - Other disorders of the nervous system (G99)
 - Eye & Ear Diseases are in two separate Chapters (7 & 8)

- **ICD-10-CM Chapter 6 Guideline Focus**

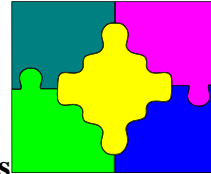
- Dominance/nondominant side
- Pain

- **ICD-10-CM**

- Updates terminology to reflect current medical practice

Specific Chapter 6 Blocks

- **G00-G09** Inflammatory Diseases
- **G10-G14** Systemic atrophies
- **G20-G26** Extrapyramidal and movement disorders
- **G30-G32** Other degenerative diseases
- **G35-G37** Demyelinating diseases of the CNS
- **G40-G47** Episodic and paroxysmal disorders
- **G50-G59** Nerve, nerve root and plexus disorders
- **G60-G65** Polyneuropathies and other disorders of the peripheral nervous system
- **G80-G83** Cerebral palsy and other paralytic syndromes
- **G89-G99** Other disorders of the nervous system



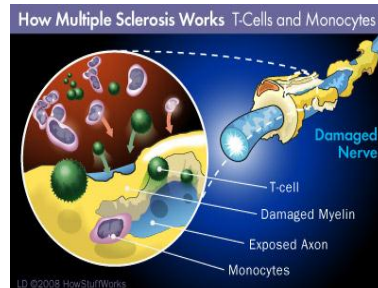
Official Code Guidelines



- **Chapter 6: Diseases of the Nervous System**
 - Site & Laterality Designations
 - Increased Instruction Notes (Code first; Use Additional Code)
 - Enhanced Combination Codes
 - Updated Terminology to Reflect Current Medical Practices
- **Dominant/nondominant**
 - Should the affected side be documented, but not specified as dominant or nondominant, and the classification system does not indicate a default, code selection is as follows:
 - For ambidextrous patients, the default should be dominant
 - If the left side is affected, the default is non-dominant
 - If the right side is affected, the default is dominant
- **Pain**
 - Acute versus chronic; Pain Management; Other

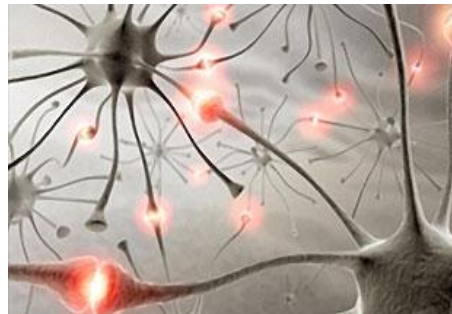
Multiple Sclerosis: G35

- **Multiple Sclerosis**
 - **Demyelinating Disease of the Central Nervous System**
- **MS G35 Includes:**
 - **Disseminated multiple sclerosis**
 - **Generalized multiple sclerosis**
 - **Multiple sclerosis NOS**
 - **Multiple sclerosis of brain stem**
 - **Multiple sclerosis of cord**
- **Primary or Secondary Diagnosis**
- **List all Pertinent Diagnoses on Plan of Care**
- **Resources: National MS Society**



Epilepsy: G40

- **Brain Disorder in which clusters of brain cells send abnormal signals to the body**
- **Causes**
 - **Trauma**
 - **Congenital**
 - **Drug induced**
 - **Other**
- **Code Selection**
 - **Type of Epilepsy**
 - **Intractable or not intractable**
 - **With or without status epilepticus**



Code Guidelines

- **Intractable Considerations**
 - **Following Terms are considered equivalent to intractable**
 - **Pharmacoresistant (pharmacologically resistant)**
 - **Treatment resistant**
 - **Refractory (medically) and poorly controlled**
- **Status Epilepticus (SE)**
 - **Status epilepticus (SE) is a common, life-threatening neurologic disorder.**
 - **Essentially an acute, prolonged epileptic crisis**
- **Treatment Guidelines**
 - **Etiology**
 - **Co-morbidities**

ICD-10-CM Epilepsy Examples

- **G40 Epilepsy and recurrent seizures**
- **G40.001 Localization-related (focal)(partial) idiopathic epilepsy and epileptic syndromes with seizures of localized onset, not intractable, with status epilepticus**
- **G40.009 Localization-related (focal)(partial) idiopathic epilepsy and epileptic syndromes with seizures of localized onset, not intractable, without status epilepticus**
- **G40.101 Localization-related (focal)(partial) symptomatic epilepsy and epileptic syndromes with simple partial seizures not intractable, with status epilepticus**
- **G40.109 Localization-related (focal)(partial) symptomatic epilepsy and epileptic syndromes with simple partial seizures not intractable, without status epilepticus**

CP & Other Paralytic Syndromes

- **Cerebral Palsy**
 - Usually appears before the age of 3
 - Underdeveloped or damaged brain cells impact movement, learning, hearing, sight, and thinking
- **Hemiplegia**
 - Complete paralysis of one entire side of body
 - Congenital or acquired
- **Paraplegia**
 - Paralysis of lower extremities
 - Acquired or congenital
- **Monoplegia**
 - Paralysis of one limb

Code Assignment

- **Requires Documentation**
 - Type of paralytic syndrome
 - Laterality
 - Dominant or nondominant side affected, as necessary
- **Code Guidelines**
 - Should the affected side be documented, but not specified as dominant or nondominant, and the classification system does not indicate a default, code selection is as follows:
 - For ambidextrous patients, the default should be dominant
 - If the left side is affected, the default is non-dominant
 - If the right side is affected, the default is dominant
- **Check Default Codes by Categories**

ICD-10-CM Examples

- G80.0 Spastic quadriplegic cerebral palsy
- G80.1 Spastic diplegic cerebral palsy
- G80.2 Spastic hemiplegic cerebral palsy
- G80.3 Athetoid cerebral palsy
- G80.4 Ataxic cerebral palsy
- G81.00 Flaccid hemiplegia affecting unspecified side
- G81.01 Flaccid hemiplegia affecting the right dominant side
- G81.02 Flaccid hemiplegia affecting left dominant side
- G81.03 Flaccid hemiplegia affecting right nondominant side
- G81.04 Flaccid hemiplegia affecting left nondominant side

More ICD-10-CM Examples

- G81.90 Hemiplegia, unspecified affecting unspecified site
- G81.91 Hemiplegia, unspecified affecting right dominant side
- G81.92 Hemiplegia, unspecified affecting left dominant side
- G81.93 Hemiplegia, unspecified affecting right nondominant
- G82.20 Paraplegia, unspecified
- G82.21 Paraplegia, complete
- G82.22 Paraplegia, incomplete
- G82.50 Quadriplegia, unspecified
- G82.51 Quadriplegia, C1-C4 complete
- G82.52 Quadriplegia, C1-C4 incomplete
- G82.53 Quadriplegia, C5-C7 complete
- G82.54 Quadriplegia, C5-C7 incomplete

Case Scenario

- Patient admitted post hospitalization with acute bronchitis due to streptococcus. Remains on antibiotics for the next 3 days. Patient is a Type 1 diabetic with peripheral vascular disease due to the diabetes. Paraplegic.

J20.2 Acute bronchitis due to streptococcus

E10.51 Type 1 diabetes with peripheral angiopathy

G82.20 Paraplegia, unspecified

More ICD-10-CM Examples

- **G20 Parkinson's Disease**
 - Excludes 1 Dementia with Parkinson's (G31.83)
- **G21.0 Malignant neuroleptic syndrome**
- **G21.11 Neuroleptic induced parkinsonism**
- **G21.19 Other drug induced secondary parkinsonism**
- **G24.81 Drug induced subacute dyskinesia**
- **G24.82 Drug induced acute dystonia**
- **G25.0 Essential tremor**
- **G30.0 Alzheimer's disease with early onset**
- **G30.1 Alzheimer's disease with late onset**
- **G30.8 Other Alzheimer's disease**
- **G30.9 Alzheimer's disease, unspecified**

Another Case Scenario

- **68 year old MS patient admitted post hospitalization for recurring UTI's secondary to foley catheter. Remains on antibiotics for 5 more days. Suprapubic placed. SNV & Therapy.**

N39.0 UTI, site not specified

Z43.5 Attention to artificial opening: Cystostomy

R39.81 Functional urinary incontinence

G35 Multiple sclerosis

Use additional code for infectious agent, if known

More Case Scenarios

- **Patient admitted PT only for Parkinson's .
Therapy to address “freezing episodes” ; safety;
strengthening posterior muscles and gait training**
 - Z51.89 Other Physical Therapy
 - G20 Parkinson's Disease
- **Transient cerebral ischemic attack; HTN with
Hypertensive Heart Disease; Alzheimer's**
 - G45.9 Transient cerebral ischemic attack, unspecified
 - I11.0 Hypertensive Heart Disease *with* Heart Failure
 - I50.9 Heart Failure, unspecified
 - G30.9 Alzheimer's disease, unspecified

Quick Check



- **ICD-10-CM Guidelines direct coders to default to dominant side if the patient's monoplegia is right sided with no other information documented.**
 - True
 - False
- **A Z code for aftercare for a fracture is used when there is no surgical intervention post fracture.**
 - True
 - False
- **Pathologic fractures are combination codes with the etiology of the fracture, such as osteoporosis.**
 - True or False

Complications: M97

- **Moved to Procedure Specific Body Systems Chapters**
 - Intraoperative & Postprocedural Complications
 - Additional codes to specify nature of complication
- **Examples:**
 - **G97.0** Cerebrospinal fluid leak from spinal puncture
 - **G97.2** Intracranial hypotension following ventricular shunting

Some Complication Examples

- **G97.1 Other reaction to spinal and lumbar puncture**
 - Headache due to lumbar puncture
- **G97.2 Intracranial hypotension following ventricular shunting**
- **G97.41 Accidental puncture or laceration of dura during a procedure**
- **G97.48 Accidental puncture and laceration of other nervous system organ or structure during a nervous system procedure**
- **G97.51 Postprocedural hemorrhage and hematoma of a nervous system organ or structure following a nervous system procedure**

Consider Coder Challenges

- **Back to Basics**
 - Utilize 10 Steps of Code Assignment
 - Use both Alphabetic and Tabular Index
 - Visit: www.who.int.classifications/icd/en
 - Access searchable database of codes
- **Cannot Rely on Coding Guidance**
 - All Previous Guidances Retired with ICD-9-CM
 - Instructions embedded in Tabular Index
- **ICD-10 is the Property of WHO**
 - Additional Guidance requires WHO Approval
 - Stay tuned for more information on this process

More Challenges

- **Documentation Needs**
 - Requires *increased specificity* in the clinical documentation
- **Specific Documentation Needs**
 - *Laterality; Severity; Specific Affected site; Clinical Specificity*
 - **Examples:**
 - Age-related osteoporosis with current pathological fracture, left shoulder (M80.012)
 - Chronic gout due to renal impairment (M1a.3)
 - Connective tissue stenosis of neural canal (M99.4)
 - Lung involvement in systemic lupus erythematosus (M32.13)

Agency Risk Areas



- **Lack of access to ICD-10-CM Resources**
- **Lack of supporting physician documentation for accurate primary and secondary diagnoses and code assignment**
 - Lack of access to precise clinical documentation
- **Lack of substantiating clinician documentation in the OASIS assessment to support the selection and sequencing of primary and secondary diagnoses**
- **Not following ICD-10-CM code convention and Code Guidelines**

Resource Web Sites

www.cms.hhs.gov/ICD10
Centers for Medicare & Medicaid Services
ICD-10 Web Site

www.cdc.gov/nchs/icd/icd10cm.htm#10update
Centers for Disease Control
Official ICD-10-CM Code Guidelines

www.ahima.org
AHIMA (American Health Information Management Association)

www.cms.hhs.gov/ICD9ProvidersDiagnosticCodes/03_meetings.asp
ICD-9-CM Coordination & Maintenance Committee Meetings

www.medicalspecialtycoding.com
Board of Medical Specialty Coding



Available Education Programs as Webcasts and DVDs

- ICD-10-CM Transition - 6 Part Series
- Available as individual programs. Part 1: Fundamentals, Part 2: Diabetes, Part 3: Cardiovascular, Part 4: Pulmonary, Part 5: Rehabilitation, Part 6: Wounds
- ACOs: What Impact Do They Have on The Health Care System and Home Care?
- Infection Control for Home Care and Hospice Question and Answer Session
- Episodic Payment System (NY) Webcast Series - 2 Part Series
- Health Care Reform, Palliative Care and Quality of Life Issues - Live Webcast on 7/18/12 (1 - 2pm EST)
- 2013 ICD-9-CM Code Updates
- ICD-9-CM Code Series (Beginner; Intermediate; Advanced)
- 2013 Home Health PPS Updates
- FREE Program - Home Health Audit Priorities
- FREE Program - ICD-10-CM: Coming to Home Health in 2013

For more information on our education programs and products go to:
<http://education.rbclimited.com/store.php>

ABOUT RBC LIMITED

Our satisfied customers rely on us for our expertise in:

- PPS and OASIS Training (Integrated OASIS Solutions™);
- ICD-9-CM Coding;
- Report Code Scans & Audits;
- Corporate and Regulatory Compliance;
- Preparation for Accreditation;
- Performance Improvement;
- Clinical Operations;
- Emergency Disaster Planning;
- Infection Control;
- Administration and Organizational Structure;
- On-site Interim Management;
- Strategic and Business Continuity Planning;
- Staff Education and Retreats;
- Quality Outcome Enhancement;
- Best Practices and Leadership Development; and
- HIPAA.

RBC Limited Healthcare & Management Consultants • *“Timely, insightful guidance”*

P: 845-889-8128 • E: rbc@netstep.net • www.rbclimited.com

This program was brought to you by:



Produced by: RBC Management Group