

Module 8B

Behavior as Communication: Understanding and Responding



alzheimer's  association®

Is This Dementia-Related Behavior an Immediate Risk?

Wearing mismatched clothes

No

Asking repeated questions

No

Pacing or wandering

Maybe

Refusing a bath or shower

Maybe

Tries to hit you

YES

What You'll Learn

- Recognize when a dementia-related behavior is an immediate risk
- Describe two responses to an immediate risk
- Describe how to use a behavior log
- Identify the importance of a strength-based care plan

When a Dementia-Related Behavior is an Immediate Risk

A dementia-related behavior becomes an immediate risk when an individual:



- Is going to hurt themselves
- Is going to hurt you
- Is going to hurt others

Investigating Dementia-Related Behaviors:

- What is the person trying to communicate?
- What is the trigger?
- Is there a pattern?
- How can it be prevented?



Add to the care plan to minimize the chance of recurrence

Investigating Behavior: Using a Behavior Log

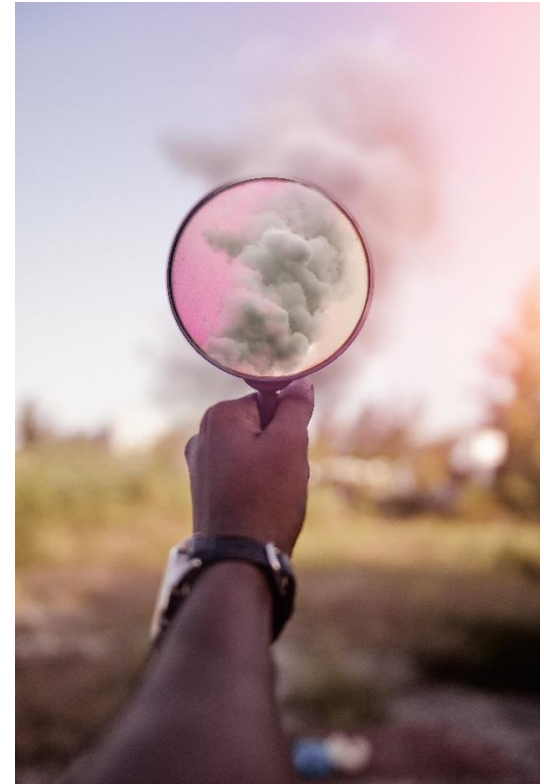


- What is the behavior?
- When did it happen?
- Where did it happen?
- Who was there?
- What was going on before the behavior?

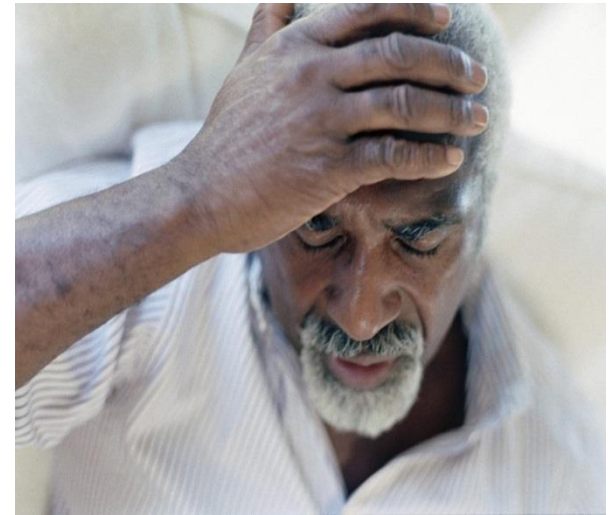
Investigating Dementia-Related Behaviors

Additional Questions

- Is there a pattern?
- Was it caused by a communication problem?
- Was it caused by the environment?
- Was it caused by our approach to care?
- Was it caused by a lack of activity?
- Could it be caused by an internal trigger?



Putting it All Together: Using the Behavior Log



Updating a Care Plan

- Strength-based approach
- Dignity and respect
- Optimize functioning
- Maximize autonomy
- Treat medical and psychiatric conditions
- Basic needs
- Person-centered care approach
- Re-assess as needed



What Did We Talk About Today?

Let's Review...

When a Dementia-Related Behavior is an Immediate Risk

A dementia-related behavior becomes an immediate risk when an individual:



- Is going to hurt themselves
- Is going to hurt you
- Is going to hurt others

Investigating Dementia-Related Behaviors:

- What is the person trying to communicate?
- What is the trigger?
- Is there a pattern?
- How can it be prevented?



Add to the care plan to minimize the chance of recurrence

Investigating Behavior: Using a Behavior Log

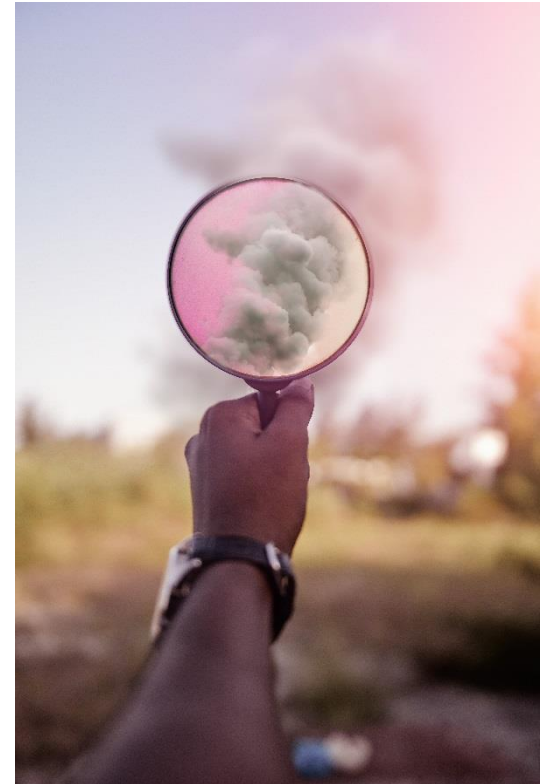


- What is the behavior?
- When did it happen?
- Where did it happen?
- Who was there?
- What was going on before the behavior?

Investigating Dementia-Related Behaviors

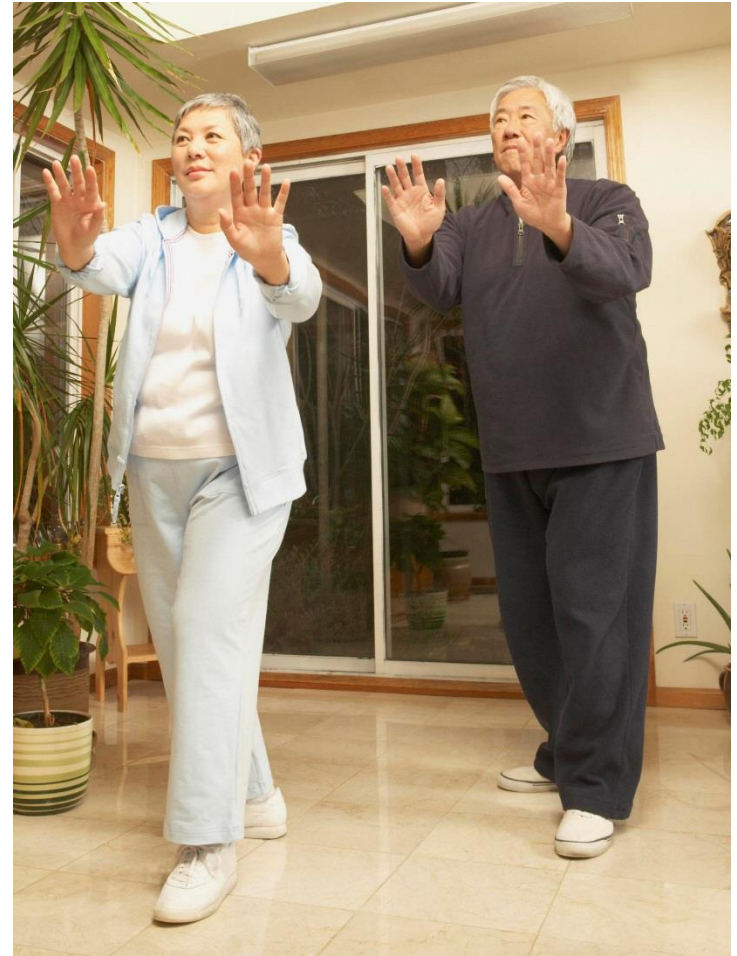
Additional Questions

- Is there a pattern?
- Was it caused by a communication problem?
- Was it caused by the environment?
- Was it caused by our approach to care?
- Was it caused by a lack of activity?
- Could it be caused by an internal trigger?



Updating a Care Plan

- Strength-based approach
- Dignity and respect
- Optimize functioning
- Maximize autonomy
- Treat medical and psychiatric conditions
- Basic needs
- Person-centered care approach
- Re-assess as needed



Let's See What You've Learned

**Test 8B: Behavior as Communication: Understanding
and Responding**