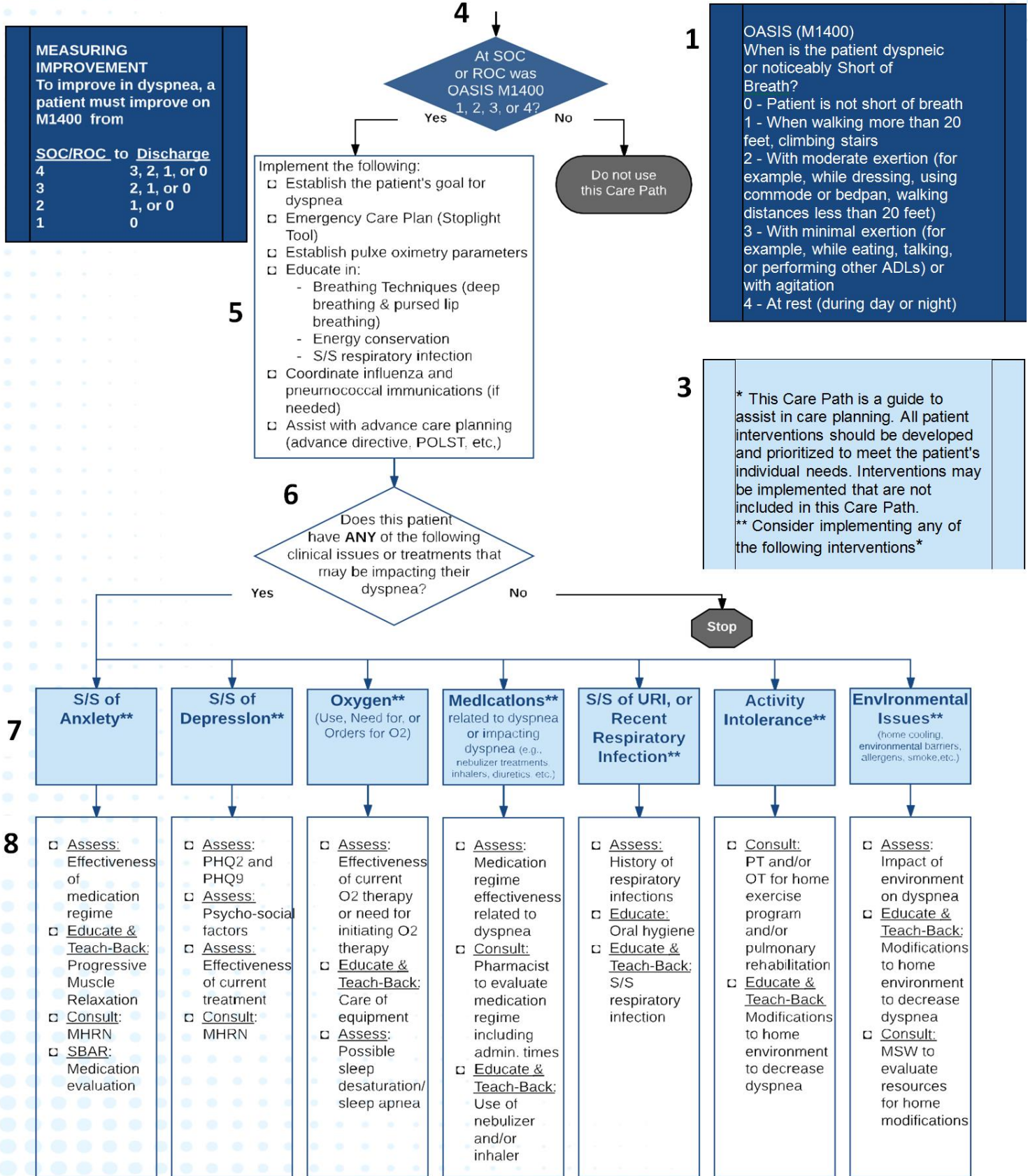


Care Path: Improvement in Dyspnea



References

Anxiety and Depression Association of America.

<https://www.adaa.org/resources-professionals/practice-guidelines-gad>

Groh, C. J. (2016). Depression in Home Based Care: The Role of the Home Health Nurse. *Home Healthcare Now*, 34 (7),360–368. Retrieved from http://www.journalofscience.net/File_Folder/23-26.pdf

McGoldrick, M. (2010). Preventing Infections in Patients Using Respiratory Therapy Equipment in the Home. *Home Healthcare Nurse*, 28(4), 212-220. Retrieved from http://journals.lww.com/homehealthcareonline/Fulltext/2010/04000/Preventing_Infections_in_Patients_Using.3.aspx

McNamara, R. J., Elkins, M. R. (2016). Home-based rehabilitation improves exercise capacity and reduces respiratory symptoms in people with COPD. *British Journal of Sports Medicine*, 51(3). Retrieved from <http://bjsm.bmj.com/content/51/3/206>

Mendes de Oliveira, J., Studart Leitão Filho, F. S., Sampaio, L. M., Negrinho de Oliveira, A. C., Hirata, R. P., Costa, D., Donner, C. and de Oliveira, L. V. (2010). Outpatient vs. home-based pulmonary rehabilitation in COPD: a randomized controlled trial. *Multidisciplinary Respiratory Medicine*, 5(6): 401– 408. Retrieved from <https://www.ncbi.nlm.nih.gov/pmc/articles/PMC3463054/>

Naveen, J. M., Porkodi, A., Akila P. (2014) Effectiveness of Progressive Muscle Relaxation in Psycho-Physiological Parameters among Patients with COPD. *Journal of Science*, 4 (1), 23-26. Retrieved from http://journals.lww.com/homehealthcareonline/Fulltext/2016/07000/Depression_in_Home_Based_Care_The_Role_of_the.3.aspx

Sassi-Dambro, D. E., Eakin, E. G, Ries, A. L., Kaplan, R. M. (1995). Treatment of Dyspnea in COPD: A Controlled Clinical Trial of Dyspnea Management Strategies. *Chest*, 107(3) 724–729. Retrieved from <http://www.sciencedirect.com/science/article/pii/S0012369215445301>

Strijbos, J.H., Postma, D.S., van Altena, R., Gimeno, F., Koëter, G.H. (1996). A Comparison Between an Outpatient Hospital-Based Pulmonary Rehabilitation Program and a Home-Care Pulmonary Rehabilitation Program in Patients With COPD: A Follow-up of 18 Months. *Chest*, 109(2), 366-72. Retrieved from <https://www.ncbi.nlm.nih.gov/pubmed/8620707>